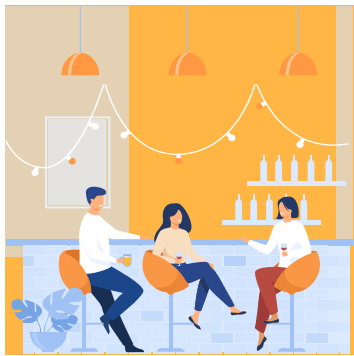


WHAT TO EXPECT FOR **PHASE 3**

**RESUMING MORE
ACTIVITIES SAFELY**

ON 28 DECEMBER 2020



Group size for gatherings will be increased from five to eight pax

- Social gatherings and household visitors will allow up to eight pax at any point in time



Capacity limits of premises will be increased

- Capacity limits will be increased from 10m² to 8m² per pax in malls and large standalone stores
- Attractions can start applying to the Singapore Tourism Board (STB) to increase their operating capacity from 50% to up to 65%



Capacity for congregational and other worship services will be increased up to 250 pax

- Services should be conducted in zones of 50 pax each for congregational services
- Congregational and other worship services as well as religious rites/prayers conducted at places of worship may involve live performance elements, e.g. with a limited number of singers, wind and other instruments, with the necessary safe management measures in place



Total of 10 pax for marriage solemnisations + up to eight visitors allowed

- Hosting households may invite up to eight visitors (excluding members of hosting household, the solemniser and vendors), even if this exceeds the existing cap of 10 pax.



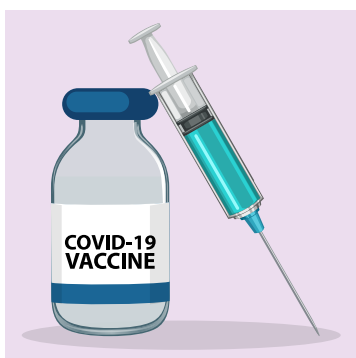
Changes in regulations for indoor live performances

- Indoor live performances can have up to 250 pax (in zones of up to 50 each)
- Pilots for up to 250 pax in live performances for outdoor venues (in zones of 50 each)



Mandatory TraceTogether for SafeEntry check-ins will only be rolled-out in early 2021

- During this period, visitors can still perform SafeEntry check-in via the TraceTogether App, SingPass Mobile, or QR reader apps, or use their identity cards with barcodes such as NRIC, Pioneer or Merdeka Generation cards.



Access to Vaccine

- Singaporeans and long-term residents in Singapore will be able to get vaccinated by end-2021.
- While COVID-19 vaccination will be voluntary and free, everyone is encouraged to get vaccinated.
- As the vaccine supply will arrive in batches, first priority will be given to those who are at greater risk such as healthcare workers, COVID-19 frontline workers, and vulnerable groups, in terms of age and health, at greater risk of severe disease from COVID-19 infection.

Please visit <https://www.moh.gov.sg/news-highlights/details/moving-into-phase-three-of-re-opening> for the latest highlights on COVID-19.

Sources - Gov.sg and Moh.gov.sg