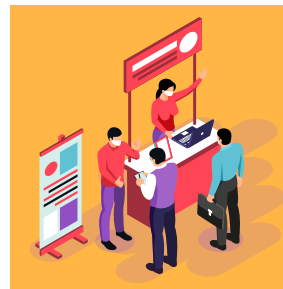


EASING RESTRICTIONS HIGHLIGHTS



Work From Home (WFH) remains default; more can return to workplace, but employers must ensure:

- Returning employees WFH at least ½ the time
- No more than ½ of returning employees at workplace at any time
- Implement flexible work hours, stagger reporting times



Business-oriented work events may resume

- Work-related events within the workplace premises that are business-oriented (such as conferences, seminars, corporate retreats, Annual General Meetings and Extraordinary General Meetings) will be allowed to resume, for up to 50 persons (or lower depending on venue capacity based on safe management principles) with strict adherence to SMM requirements e.g. at least 1 metre safe distancing between each employee.



Worship services

- From 3 Oct, up to 100 pax allowed (50 pax per zone)



Solemnisation & wedding receptions

- From 3 Oct, up to 100 pax allowed (50 pax per zone/slot) Including couple, excluding vendors/service providers
- From Nov: pilot for wedding receptions at HDB common areas, Town Council MPHs



Mask required for children 6 years and above

- Up from the 2 years and above currently
- Young children still strongly encouraged to wear mask/face shield, especially in group settings or when interacting with others



From Oct 1, large cinema halls with more than 300 seats will be allowed to admit up to 150 patrons in three zones of 50 patrons each.

- Other, smaller cinema halls will also be allowed to increase their capacity to 50 per cent of their original operating capacity or maintain the current limit of up to 50 patrons per hall, subject to safe management measures.